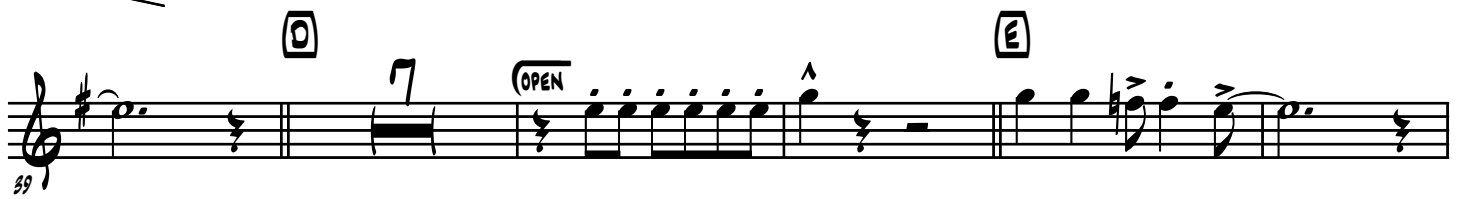
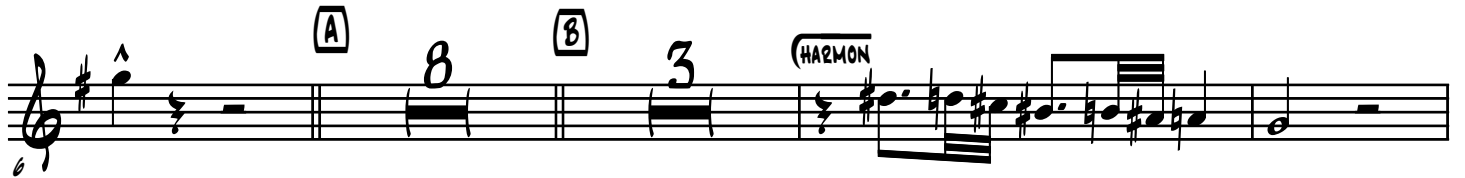
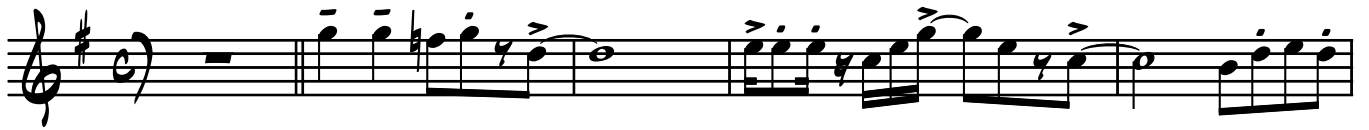


Trumpet in Bb 2

Hold On To The Light

S.Ljungbladh Arr. C.Wallin



Tp2:2

Hold On To The Light

G

Musical staff 1 (measures 64-68). The staff begins with a treble clef, a key signature of two flats (B-flat and E-flat), and a 4/4 time signature. It contains a sequence of eighth and sixteenth notes, followed by a whole note chord marked with a circled 'G' above it. The measure number '64' is written below the staff.

Musical staff 2 (measures 69-73). This staff continues the melodic line with eighth and sixteenth notes. The measure number '69' is written below the staff.

Musical staff 3 (measures 74-78). This staff features a melodic line with eighth notes and a dynamic marking of a less-than sign (<) below the staff. The measure number '75' is written below the staff.

Musical staff 4 (measures 79-83). This staff continues the melodic line with eighth notes and includes a circled 'H' above the staff. The measure number '81' is written below the staff.

Musical staff 5 (measures 84-88). This staff continues the melodic line with eighth notes. The measure number '87' is written below the staff.

Musical staff 6 (measures 89-93). This staff includes a melodic line with eighth notes and two double bar lines with a '2' above them, indicating a double-measure rest. The measure number '93' is written below the staff.

Musical staff 7 (measures 94-101). This staff concludes the piece with a final melodic line and a whole note chord marked with a circled 'H' above it. The measure number '101' is written below the staff.